



NMUN • EUROPE

LILLE, FRANCE 2012

CONFERENCE PROGRAM 2012

Secretary-General: Théo Thieffry; Director-General: Holger Bär



NMUN • EUROPE

NATIONAL MODEL UNITED NATIONS

nmun.org

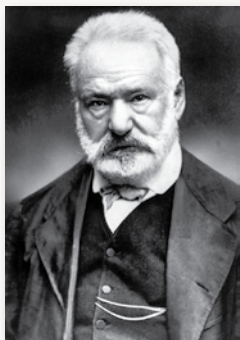
31 January - 6 February 2012



NATIONAL
COLLEGIATE CONFERENCE
association™

TABLE | contents

Welcome Letters.....	3, 5
Upcoming NMUN Events	4
Lille, Nord-Pas-de-Calais Information.....	6
Committees & Topics.....	7
Conference Schedule & Locations.....	8 - 9
Lille Map	10
Conference Guide.....	11
NMUN-Europe Secretariat & Recognition.....	12 - 13
Delegations	14 - 15
Codes of Conduct & Policies	16 - 17
About Sciences Po Lille	18
NMUN-Europe Rules Short Form	20



Un jour viendra où il n'y aura plus d'autres champs de bataille
que les marchés s'ouvrant au commerce et les esprits s'ouvrant
aux idées.

*A day will come when the only fields of battle will be markets
opening up to trade and minds opening up to ideas.*

– Victor Hugo (1802-1885), French author

Address to the International Peace Congress (1849)

nmun.org

NCCA & NMUN INFORMATION & RESOURCES:

Phone: 612.353.5649
Fax: 651.305.0093
E-Mail: info@nmun.org

Mailing Address:
2945 44th Ave. S., Suite 600
Minneapolis, MN 55406
USA

UNITED NATIONS



NATIONS UNIES

THE SECRETARY-GENERAL

MESSAGE TO NATIONAL MODEL UNITED NATIONS - EUROPE

Lille, 31 January – 6 February 2012

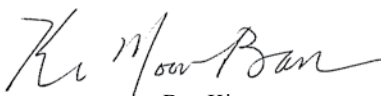
You meet at a time of great change and challenge. Our world faces an increasingly complex set of realities, from rising joblessness to growing inequality to the increasing dangers of climate change. Many people are disillusioned with the established order; there is distrust in institutions; and a general sense that the playing field, be it national or global, is tilted in favour of entrenched interests and elites.

We need to forge a common agenda that can help ensure that future generations grow up in a world of sustainable peace, prosperity, freedom and justice. To help build this future, I believe the world must focus on five imperatives: first, sustainable development; second, conflict prevention; third, standing up for democracy and human rights; fourth, supporting countries in transition; and fifth, working with and for women and young people.

You have a crucial role to play. The world's young people are more than our future. You are also our present, both in numbers and how you are using technology and creativity to drive political and social change. You will soon be the government officials who will negotiate peace ... the community leaders who will help feed and shelter the vulnerable ... the entrepreneurs and innovators who will get carbon emissions under control ... the lawyers and human rights defenders who will fight impunity and teach tolerance. We must work together to create decent jobs and opportunities for you – so you can realize this great potential.

This Model United Nations can contribute to our push for progress. By participating, you will hone your negotiating skills and learn what it takes to achieve consensus. Armed with these assets, you can mobilize, engage and act on major issues of our day. From raising awareness through Facebook and Twitter to joining forces in other ways with like-minded students from around the world, you can make your voices heard.

This is an era of great uncertainty, but also one of profound opportunity for individuals to make a difference. The human family now has seven billion members. Please help us shape our shared future for the better, and help the United Nations deliver what the world needs at this crucial moment. I wish you great success at this Model UN, and I hope the experience will inspire you to support our work for peace, justice, human rights and sustainable development for years to come.


Ban Ki-moon



NMUN•NY 2012 brings together 5,000+ delegates from five continents. Our preeminent conference engages students in discussions of current global issues with the UN Headquarters providing an impressive backdrop.

DATES: 1 - 5 & 3 - 7 April 2012



NMUN•DC 2012 is held in the heart of the embassy district drawing delegates from all over the world. More than 400 students annually participate in discussions of issues at the forefront of international relations.

DATES: 26 - 28 October 2012

NMUN•International offers conferences worldwide. Past sessions include China (Nov. 2008), Ecuador (Jan. 2010), the Czech Republic (Nov. 2010) and Lille (Jan. 2012). Visit nmun.org for information on future opportunities.

– FIND US ONLINE –



[facebook.com/
National Model United Nations](https://www.facebook.com/NationalModelUnitedNations)



[@TheOfficialNMUN](https://twitter.com/TheOfficialNMUN) and [#nmun](https://twitter.com/nmun)



[youtube.com/nationalmodelun](https://www.youtube.com/nationalmodelun)



NATIONAL MODEL
UNITED NATIONS

nmun.org

January 2012

Dear participants of NMUN•Europe 2012,

Bienvenue en France! It is an honour and pleasure to welcome you to Lille. The NMUN•Europe staff, the students of Sciences Po Lille, and the members of the Nord-Pas-de-Calais Regional Council all join me in wishing you a pleasant stay here. We will all work very hard to make NMUN•Europe an unforgettable experience for all of you.

Lille is a wonderful city, and the perfect place to hold a NMUN conference. It is the capital city of the region Nord-Pas-de-Calais, a very dynamic region of Europe. It is at the crossroads of many European capitals (Paris, Brussels, London...), and is home to many academic and cultural institutions. Lille is also a city full of history, as it was for example the birthplace of General Charles de Gaulle. During your stay here, I encourage you to visit the several museums, restaurants, bakeries, or breweries that we have in the city. Also, because of the number of students living here, Lille is a young and lively place; you should also take the opportunity to enjoy the nightlife here!

Sciences Po Lille and the Nord-Pas-de-Calais Regional Council are modern and dynamic institutions that reflect very well the spirit of Lille and the region. The Regional Council building is very recent, and was built as an eco-friendly construction, which corresponds very much to one focus of this conference.

Indeed, this conference will be looking to the future: many topics this year focus on sustainable development. Our generation probably understands better than any other the importance that this issue will have in the future, and one of your tasks at NMUN•Europe this year will be to emphasize this importance.

I wish you all the best for the many hours of negotiation and debate that await you during this conference. I will conclude with this quote from Voltaire – a philosopher of the Enlightenment – that I encourage every delegate to keep in mind: “I do not agree with what you have to say, but I will defend to death your right to say it.”

Once again, welcome to Lille,

Théo Thieffry
Secretary-General

NMUN•Europe is sponsored by the National Collegiate Conference Association in partnership with Sciences Po Lille. NCCA/NMUN is a 501(c)3 non-profit organization of the United States and an accredited Non-Governmental Organization with the United Nations.

LILLE, NORD-PAS-DE-CALAIS



Situated next to Belgium and across the Strait of Dover from the shores of the United Kingdom, Nord-Pas-de-Calais is the northernmost of France's 27 regions. With over four million people, it is one of Europe's most densely-populated regions. While Nord-Pas-de-Calais is predominantly French-speaking, it also has distinct communities that represent two significant minority languages: Flemish and Picard.

For centuries, many invading armies made claims to the region because of its central location and strategic importance. The area also drew attention for its rich mineral resources. The region underwent major industrialization during the 19th century and became a hub for coal mining and steel production. By World War I, it had grown into one of the leading industrial centers of France. In the last twenty years, investments from the French government and European Union have turned the region into a transportation hub for the millions of passengers traveling by train between Brussels, London, and Paris every year.



Nord-Pas-de-Calais' largest city, Lille, has a population of about 1 million. The name comes from l'isle ("the island"), a reference to a castle surrounded by a marsh that was built near present-day Lille. Interestingly, the Flemish name for the city, Rijsel, has the same meaning. Lille is notable as the birthplace of one of France's most famous historical figures, President Charles de Gaulle. With a student population of over 110,000, it is considered one of France's top cities for higher education.

While Lille prospered as an industrial and manufacturing capital in the early 20th century, it is now known throughout France as an active and cultural city. Popular tourist destinations include the main city square at Grand Place, the modern and contemporary galleries in the LAM, the classical art collections in the Palais des Beaux-Arts, and the cultural exhibitions and events held inside the renovated train station at Gare Saint-Sauveur. The belfries of Lille are typical of the architectural style of the area, which are collectively recognized as UNESCO World Heritage Sites. Often mistaken for churches, these distinctive towers usually adorn city halls and official buildings. Thanks to this cultural and architectural identity, Lille was elected as the European Cultural Capital in 2004.



committees & topics NMUN-EUROPE

GENERAL ASSEMBLY PLENARY

1. Fostering the role of prevention in health care
2. Africa's economic development, exploitation of natural resources and national sovereignty
3. Fostering the implementation of the World Programme of Action for Youth

SECURITY COUNCIL

1. Protection of civilians in armed conflicts
2. Reform of the Security Council

UNITED NATIONS CONFERENCE ON SUSTAINABLE DEVELOPMENT (UNCSD):

1. Green economy in the context of sustainable development and poverty eradication
2. Institutional framework for sustainable development
3. The social dimension of the green economy

EUROPEAN UNION - LATIN AMERICA AND CARIBBEAN SUMMIT (EU-LAC):

1. Strengthening bi-regional agreements and dialogue on environment, climate change, sustainable development and energy
2. Developing the structured and comprehensive dialogue on migration from IAC to EU:
Implementing bi-regional cooperation activities and initiatives on migration
3. Implementation of recommendations made from EU-LAC Coordination and Cooperation Mechanism on Drugs



NMUN·EUROPE conference schedule

TUESDAY, 31 JANUARY

All Day Arrival of International Delegations

WEDNESDAY, 1 FEBRUARY

7:30 am – 11:00 pm Cultural Visit to Brussels, Belgium
(by prior arrangement)

THURSDAY, 2 FEBRUARY

Morning	City Tour of Lille	
12:00 pm – 3:00 pm	Registration & Rules Training	Salle Polyvalente
4:00 pm – 5:30 pm	Opening Plenary	Hémicycle 3 & 4
5:30 pm – 8:00 pm	Session I	Committee Rooms, Conseil Régional
7:30 pm	Advisors Reception	Salle 2-2 bis

FRIDAY, 3 FEBRUARY

9:30 am – 1:00 pm	Session II	Committee Rooms, Conseil Régional
1:00 pm – 3:00 pm	Lunch Break	
3:00 pm – 5:00 pm	Session III	Committee Rooms, Conseil Régional
3:30 pm	Tour of Science Po Lille for Advisors	Meet in Lobby of Conseil Régional to walk to campus
5:00 pm – 5:30 pm	Break	
5:30 pm – 9:00 pm	Session IV	Committee Rooms, Conseil Régional

SATURDAY, 4 FEBRUARY

9:30 am – 1:00 pm	Session V	Committee Rooms, Conseil Régional
1:00 pm – 3:00 pm	Lunch Break	
3:00 pm – 6:00 pm	Session VI	Committee Rooms, Conseil Régional

conference schedule NMUN·EUROPE

SUNDAY, 5 FEBRUARY

9:30 am – 12:00 pm	Session VII	Committee Rooms, Conseil Régional
12:00 pm – 2:30 pm	Lunch Break	
2:30 pm – 4:30 pm	Closing Ceremony & Reception*	Hémicycle 3 & 4

**Reception will be held in Salons de Réception immediately following the Closing Ceremony. NMUN is grateful to the Conseil Régional for sponsorship of this reception as well as use of their facilities.*

COMMITTEE LOCATIONS**

General Assembly	Salle Polyvalente, Conseil Régional
Security Council.....	Salons 1 & 2
UN CSD	Salon 3
EU LAC	Salon 4
Conference Services	Hémicycle 3 & 4

**All committees are held at Conseil Régional, see map on next page.



Théo Thieffry
Secretary-General

Holger Bär
Director-General

General Assembly Plenary

Director – Ronnie Heintze
Assistant Director – Clara Demon
Assistant Director – Theresa Monaghan

Security Council

Director – Sameer Kanal
Assistant Director – Pauline Marcou

United Nations Conference
on Sustainable Development

Director – Kristina Mader
Assistant Director – Agathe Cavicchioli

European Union - Latin America and
Caribbean Summit

Director – Lucas M. Carreras
Assistant Director – Camille Le Baron



Keynote Speaker:

Mr. David J. Bame, Counselor for UN Affairs, Permanent Mission of the US, Geneva

Nord-Pas-de-Calais Regional Council:

Daniel Percheron, President

François Dhalluin

Anne-Charlotte Richebé

Zineb Banneux

The Staff of the Regional Council



Sciences Po Lille:

Pierre Mathiot, Director

Elly Harris

Mirjam Zimmermann, Adrien Pascal, Mathilde Milteau, Marvin Passi, Marion Poupardin

Isadora Plumasseau, Charles Carrot, Géraldine Franc, Evan Malczyk, Jules Bardy

Anne-Sophie Tondeux, Justine Frémy, Clara-Douce McGrath, Nicolas Agüero

Anaïs Denet, Anaïs Marie, Mathilde Block, Paul Munier

The Volunteer Staff of NMUN-Europe 2012

Benjamin Oppermann, European Parliament

The Staffs of the Novotel Lille Centre Gares Hotel, the Suite Novotel Lille Europe Hotel, and the Hotel Ibis Lille Centre Gares

National Collegiate Conference Association

Prof. Richard Reitano, President

Michael Eaton, Executive Director

Heather Branigin

Mike Engh

Jeri Lu Mattson

Barbara Tuominen/E-Creative Solutions

NMUN·EUROPE delegations

COUNTRY	SCHOOL
Argentina	EDHEC (FRA) Caceres MUN (ESP)
Australia	Newcastle University (GBR)
Bangladesh	Universitas Padjadjaran (IDN)
Belgium	University of Freiburg (DEU)
Bolivia	Université du Québec à Montréal (CAN)
Bosnia and Herzegovina	De La Salle College of St. Benilde (PHL)
Brazil	Texas Christian University (USA)
Cambodia	University of Montana (USA)
Canada	De La Salle College of St. Benilde (PHL)
Chile	Ramapo College of New Jersey (USA)
China	Airlangga University (IDN)
Colombia	Palacký University (CZE)
Costa Rica	University of Mannheim (DEU)
Cuba	Bellevue College (USA)
Czech Republic	École Polytechnique (FRA)
Ecuador	Riverside Community College (USA)
Egypt	Texas Christian University (USA)
Finland	National Research University, Higher School of Economics (RUS)
France	Royal Holloway, University of London (GBR)
Gabon	École Polytechnique (FRA)
Germany	Constantine the Philosopher University (SVK)
Ghana	University of Ghana (GHA)
India	EDHEC (FRA)
Indonesia	American University of Paris (FRA)
Iran (Islamic Republic of)	Brunel University (GBR)
Italy	University of Vienna (AUT)
Japan	Zeppelin University (DEU)
Kenya	Long Island University, Brooklyn (USA)
Latvia	Kumasi Metropolitan Assembly (GHA)

delegations NMUN·EUROPE

COUNTRY	SCHOOL
Lebanon	University of Texas at Tyler (USA)
Mexico	École Polytechnique (FRA)
Netherlands	ILERI (FRA)
New Zealand	American University of Paris (FRA)
Nigeria	Technische Universität München (DEU)
Norway	University of Mannheim (DEU)
Pakistan	University of Wroclaw (POL)
Peru	Technische Universität München (DEU)
Philippines	De La Salle College of St. Benilde (PHL)
Portugal	ILERI (FRA)
Republic of Korea	National Chengchi University (TWN*) * Taiwan, Province of China (in recognition of the One China Policy)
Russian Federation	Universitas Indonesia, Faculty of Law (IDN)
Saudi Arabia	Royal Holloway, University of London (GBR)
South Africa	Long Island University, Brooklyn (USA)
Sudan	University of Ghana (GHA)
Thailand	Kumasi Metropolitan Assembly (GHA)
United Kingdom	Zeppelin University (DEU)
United Arab Emirates	Kardan University (AFG)
United States of America	Riverside Community College (USA)
Venezuela	University of Vienna (AUT)



DELEGATES

While participating in the National Model UN conference, delegates have a responsibility to always maintain the highest level of professionalism and diplomacy. Conference staff, advisors and fellow delegates should be treated with the highest level of courtesy and respect. Professionalism in speech, actions, and appearance by delegates is a requirement of this conference, and necessary to its educational mission. It is assumed that all delegates will respect the property of the United Nations and the host hotels.

NMUN reserves the right to restrict future registration for any participant or school, whose delegates or advisors are not able to uphold their responsibility to the conference's code of conduct.

Delegates are expected to:

- Remain "in character" by consistently advocating the interests and representing the policies of the country assigned. To act "in character" also entails displaying respect for the opinions and ideals of fellow delegates, even if these opinions and ideals conflict with a given delegate's own country priorities.
- Collaborate with fellow delegates when possible.
- Be courteous and professional at all times.

Delegates who disrupt committee sessions or create problems may be barred from further participation in the conference:

- Please drink responsibly. Excessive alcohol consumption should be avoided.
- The consumption of alcohol and other drugs in committee sessions is forbidden.
- Any issues related to illicit drugs will be immediately directed to the attention of local authorities.

Delegates are encouraged to enjoy the variety of nighttime activities available. Please bear in mind, however, the purpose of your participation in NMUN.

ADVISORS

The role of advisors, while at the conference, is to make all efforts to see that their students maintain a positive and professional approach to the conference. The educational quality of the conference is primarily dependent on all delegates' active and professional participation. Advisors can ensure this by monitoring their students' attendance at committee meetings and helping them understand the skills of diplomacy as practiced at National Model UN. Advisors must maintain the highest level of professionalism toward all conference participants and staff.

During the conference, advisors are encouraged to advise students on specific questions such as a state's policy or issues of international law, but must not participate in the actual writing of resolutions or caucusing activities. NMUN allows students an opportunity to demonstrate their preparation and research skills. While advisors are encouraged to observe their students from the back of committee rooms, participation in the committee process must be left to the student delegates and the conference staff.

Advisors are expected to:

- Provide leadership to their delegates and to other delegations by serving as information resources when appropriate.
- Respond to questions and concerns without interfering with the work of the committees or the deliberations of delegates, whether in formal session or in caucus.
- Refrain from using academic credit and grading policies that force participation beyond that country's normal position in the UN.
- Remind their delegates of the educational purpose of the simulation. Awards should not be a delegation's main emphasis.
- Attend and participate in advisor meetings.
- Offer suggestions and assistance to new advisors.

DRESS CODE

All clothing must adhere to guidelines that portray professionalism and modesty. If a delegate's attire is deemed inappropriate by NMUN staff, the delegate will be asked to leave the session and return with appropriate attire.

- Standard delegate attire for the conference is business jacket, slacks (or skirts for women), dress shirt (with tie for men) and dress shoes.
- Dress sweaters, shorts, ball caps, jeans, sneakers and sunglasses are considered too casual. Clothes that expose excessive bare skin or are otherwise revealing are inappropriate.
- It is not appropriate for delegates to display any national symbols such as flags, pins, crests, etc. on their person during sessions. UN symbols are acceptable.

Western business dress is preferred. Traditional dress is only permitted for international delegates in whose native countries "professional business dress" includes traditional cultural dress. NMUN will not tolerate any delegate's attempt to portray a "character" using traditional cultural attire as costume.

As role models for delegates, volunteer staff, advisors and guests are required to dress in western business attire while participating in scheduled conference sessions.

SEXUAL HARASSMENT / DISCRIMINATION POLICY

It is the intention of the NCCA that the environment of National Model United Nations supports our educational goal. The organizers will not tolerate any instances of discrimination based on race, color, sex, sexual orientation, national origin, religion, age or disability.

If any delegate, staff or advisor believes they have encountered discrimination, which results in a hostile working environment or disparate treatment, they must bring it to the attention of the Secretary-General of the conference. In the event that this is not possible, they must bring it to the attention of the organizers. The NCCA will investigate the merits of the allegations, interviewing all parties involved.

Based on the findings, organizers may:

- take no action
- issue a verbal reprimand
- separate the individual from the conference
- implement any other action deemed appropriate

DELEGATION AWARDS

National Model United Nations has established criteria for evaluating delegate performance. Each element is equally important to the overall awards determination process. All committees are weighted equally, and delegations are rated on a mathematical formula in relation to the total number of committees represented by the individual Member State.

Areas of evaluation are:

- **Remaining in character** – defined as advocating your assigned country's position in a manner consistent with economic, social and geopolitical constraints.
- **Participating in committee** – evaluated both during formal sessions and caucusing.
- **Proper use of the rules of procedure** – NMUN uses the rules of procedure to facilitate effective workings of committee and debate.

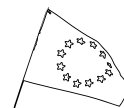
**SCIENCES
PO
LILLE.**

WWW.SCIENCESPO-LILLE.EU



The school also coordinates its research policy with three research laboratories of the University of Lille co-managed with the French National Center for Scientific Research (CNRS):

- The Lille Center for Studies and Research in Sociology and Economics (CLERSE).
- The Center for European Research on Administration, Politics and Society (CERAPS).
- The Institute for Research in History (IRHIS)



The offer of training of Sciences Po Lille may also be completed by three international double degrees: the Franco-British degrees with the University of Kent at Canterbury and Aston University in Birmingham, the Franco-German degree with the University of Münster and the Franco-Spanish degree with the University of Salamanca.

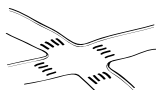


(preparation for the École Nationale d'Administration, the agrégation in economics and social sciences, etc.). Additionally, Sciences Po Lille welcomes about 180 international students each year, under the Erasmus / Socrates agreements and bilateral agreements signed with 140 universities in 34 countries.

Founded in 1991, Sciences Po Lille is a selective and diverse French university, part of the network of the nine French Institutes of Political Studies. It is attached to the University of Lille and the Center of Research and Higher Education (PRES Lille Nord de France).

Sciences Po Lille is directed, since 2007, by Pierre Mathiot, professor of political science. Its Board of Directors is chaired, since 2010, by Louis Dreyfus, who is also Chairman of the Board of Le Monde newspaper.

Sciences Po Lille is located at the crossroads of North-Western Europe, near London, Paris, Bruges, Brussels, Amsterdam and Cologne. It prepares its students for a variety of jobs and careers: administrative careers at national, European, and international level, teaching and research, management and leadership positions in business and in the voluntary sector, consulting, finance, journalism, communication, etc...



Sciences Po Lille is renowned for the diversity and quality of its educational team, consisting of 37 faculty members and 400 adjunct faculty.



The degree of Sciences Po Lille is received at the end of a course of five years.

The first cycle (3 years)

The first three years are dedicated to this «cycle of curiosity» it offers multidisciplinary training in social sciences (economics, history, political science, management, etc.), law and foreign languages. The teaching aims to provide the general knowledge and methodological tools necessary to understand and analyze the contemporary world.

This cycle ends with the third year spent abroad by the students. It is a compulsory stay in a foreign country, at a partner university or in the framework of an internship. During this year, students are also required to complete a "short" internship, in order to have a first experience of the professional world.

The second cycle (2 years)

A «Master Cycle» it is designed with a goal of gradual professionalization, and must permit a direct access to the professional world. The concentrations and majors offered are managed in close partnership with the corresponding professional networks. The course concludes with an internship of 6 to 9 months, the purpose of which is to access as easily as possible to a first job.



Sciences Po Lille and the School of Journalism in Lille (ESJ Lille) have also created since 2011 a double-degree in journalism.

Today, Sciences Po Lille enrolls 1,700 students for the degree course, and about 50 students in specific courses

Sciences Po Lille is also:

A democratization program (PEI) from which 600 high-school students from 90 schools benefit each year.

Continuing education courses offered on wide themes, in modules of 15 to 200 hours, for executives of the public and private sectors.

Finally, beginning with the 2011 academic year, Sciences Po Lille is establishing a «Partners Club» and a «Career Center».



NMUN-**EUROPE** rules short form

MOTION	PURPOSE	DEBATE	VOTE	EXPLANATION
Point of Order	Correct an error in procedure	None	None	Refers to a specific rule
Appeal the Decision of the Chair	Challenge a decision of the Chair	None	Majority	Question the Chair's ruling
Suspension of the Meeting	Recess meeting for a defined period	None	Majority	Used to go into caucus or to break for a given time
Adjournment of the Meeting	End meeting	None	Majority	Used only on final day; ends committee for the year
Adjournment of Debate	End debate without a substantive vote	2 pro / 2 con	Majority	Tables the topic; requires a roll call vote
Closure of Debate	Vote on all draft resolutions; move to immediate vote	2 con	2/3rds	Ends all discussion on current topic
Division of the Question (Used in voting only)	Consider clause(s) separately from rest of draft resolution Part I: Procedural vote on if this motion should be considered Part II: Substantive vote to accept/reject separated clauses	2 pro / 2 con None	Majority Majority	Voted on in order of most to least radical change. If passes: clause(s) removed and voted on separately If fails: no change to clause(s) Clause(s) separated out and voted on as an annex to the original draft resolution If passes: annex passes If fails: clause(s) discarded and no longer part of any draft resolution
Roll Call Vote (Used in voting only)	Vote by roll call, rather than show placards	None	None	Automatically granted once requested
Adopt by Acclamation (Used in voting only)	Pass a draft resolution as a body	None	Majority	Once motioned Chair must ask if there are any dissensions
Reconsideration	Re-open debate on an issue (Motion must be made by a member that voted for Adjournment of Debate)	2 con	2/3rds	Un-tables topic that was tabled by Adjournment of Debate
Set Speakers Time	Set the time allowed for formal speeches.	2 pro / 2 con	Majority	It is very rarely used at the UN and may be ruled out of order by the Chair.
Close the Speakers List	No additional speakers added to speakers' list on topic; re-opening speakers' list allows speaker to be added on list again	None	Majority	No new speakers can be added to list; once list is exhausted go directly into voting procedures
Adoption of the Agenda	Approval of agenda order	None	Majority	Determines the order by which the topics will be discussed; Approved topic order = agenda