



NMUN • EUROPE

CZECH

REPUBLIC

CONFERENCE PROGRAM 2015

Ivana Častulíková, Secretary-General
Thera Watson, Deputy Secretary-General



NATIONAL MODEL UNITED NATIONS

Welcome Letters.....	3, 5	NMUN•Europe Secretariat.....	12
Committee Locations.....	6	Recognition	13
Conference Schedule.....	6-7	Codes of Conduct.....	14
Olomouc Map.....	8-9	Policies and Awards.....	15
Delegations.....	10-11	Rules Short Form.....	Back Cover

Committee Topics

General Assembly Plenary (GA Plen)

1. International Cooperation Against Terrorism
2. Achieving Sustainable Development with Environmental Protection

Economic and Social Council Plenary (ECOSOC)

1. Empowering Women and Girls in the Post-2015 Development Agenda
2. Energy Governance and the International Community

United Nations Educational, Scientific and Cultural Organization (UNESCO)

1. Protection of UNESCO Sites in Conflict Areas
2. The Importance of Education and the Contributions of the Sciences, Culture, and Communication and Information in the Post-2015 Development Agenda

Security Council (SC)

1. Migration, Security, and Peacekeeping
2. Partnerships Between the United Nations and Relevant Regional Organizations in Peacekeeping Operations

NCCA/NMUN:

Mailing Address:
2945 44th Ave. S., Suite 600
Minneapolis, MN 55406

Phone: 612.353.5649
Email: info@nmun.org

FOLLOW NMUN:



nmun.org



twitter.com/theOfficialNMUN



facebook.com/NationalModelUN

UNITED NATIONS



NATIONS UNIES

THE SECRETARY-GENERAL

MESSAGE TO NATIONAL MODEL UNITED NATIONS CONFERENCE
NMUN• EUROPE
Olomouc, Czech Republic 22-28 November 2015

It is a pleasure to greet all the participants in this timely Model United Nations exercise. You gather at a moment of great challenge and consequence for the human family as we cope with dangerous threats while endeavouring to lay plans for long-term peace and sustainable prosperity.

The global landscape today is scarred by conflict, exploitation and despair. Nearly 60 million people have been forced to flee their homes – more than at any time since the end of the Second World War. In every society, women are victims of violence. The consequences of climate change are ever more apparent. Huge sums of money continue to be squandered on destabilizing military arsenals. And although the world said “never again” after the Holocaust, and again after genocides in Rwanda and Srebrenica, we continue to witness atrocious crimes by violent extremists and others.

As the United Nations this year marks its 70th anniversary, we know there is still a great distance to go in realizing the vision set out in our founding Charter. At the same time, we can look back on a proven record of fostering peace, alleviating hunger and poverty, safeguarding human rights and providing relief in the aftermath of disasters.

I have seen in my own life the difference the United Nations can make. When I was six years old, the Korean War forced my family to run for the mountains. We survived thanks to United Nations operations providing food, medicine and security, and we took heart from knowing that the world cared.

Today, the United Nations is mobilizing countries to address conflicts, disasters and other immediate crises while striving to secure our long-term future by forging a new vision for sustainable development as well as a universal climate agreement.



Through your participation in this Model United Nations, you demonstrate your concern for peace, justice, human rights and human dignity. I hope this Conference will inspire you to be a lifelong global citizen who advances these common goals.

Ban Ki-moon



NMUN•NY: 20 - 24 March or 27 - 31 March 2016 | NMUN•DC: 11 - 13 November 2016



NATIONAL MODEL UNITED NATIONS

visit us at nmun.org

NMUN•Japan: 20 - 26 November 2016 | NMUN•Galapagos: January 2018



NATIONAL MODEL UNITED NATIONS•EUROPE

SPONSORED BY THE NATIONAL COLLEGIATE CONFERENCE ASSOCIATION

Olomouc, Czech Republic, 22 - 28 November 2015

nmun.org

Ivana Častulíková
Secretary-General

Thera Watson
Deputy Secretary-General

Miriam Müller, Director
Jan Šmíd, Assistant Director
General Assembly Plenary

Yvonne Jeffery, Director
Bronislava Lehocká, Assistant Director
Economic and Social Council Plenary

Jordan Drevdahl, Director
Šárka Ševčíková, Assistant Director
United Nations Educational, Scientific and
Cultural Organization

Alfie Jones, Director
Ondřej Němčák, Assistant Director
Security Council

BOARD of DIRECTORS

Prof. Eric Cox, President

Prof. Kevin E. Grisham, Vice-President

Prof. Chaldeans Mensah, Treasurer

Prof. Pamela Chasek, Secretary

Jennifer Contreras

Raymond J. Freda

Rachel Holmes

Amierah Ismail

Prof. Markéta Žídková

EX-OFFICIO MEMBERS

Michael J. Eaton, Executive Director

Prof. Richard Murgo, Past President

Prof. Richard Reitano, President Emeritus

Dearest Delegates, Honorable Faculty Advisors, and Esteemed Guests,

Vítejte (welcome) to each and every one of you! "Czeching" us out in the charming city of Olomouc with such enthusiasm and eagerness means literally the (UN) world to everyone at Palacký University. As the hosts of the first NMUN•Europe five years ago, we are deeply honored to, once again, have been granted this wonderful privilege to host and become the center of the Model UN universe. Our Palacký University team, together with the NCCA, has created a long-distance team that has worked hard every possible minute over this past year to make sure you will feel at home.

Since 1573, Palacký University has dedicated itself to making the world a better place for all, just like the UN, by relying on scientific inquiries, probing questions, and boundless discussions. Being such a lively community concerned about the most current and troubling issues taking place at or near the European borders, we have chosen to debate many of them in our committees this week. We believe this will give you a great chance to demonstrate the leadership of your generation. As young remarkable UN leaders-to-be, you are open to dialogue on the international level, have respect for human rights, and possess a willingness to defend higher values that exceed (national) limits. We anticipate you will devise honest and collaborative responses like those we all would like to see achieved on the UN platform.

I hope you will find Olomouc and the conference a great beginning for new and ongoing friendships, something that NMUN community offers heartily and unconditionally to all of us. I was lucky enough to realize that once you join this unique group, you will become a cherished and supported member forever.

May all the festive little lights of Olomouc become an unrivalled remembrance of an unforgettable week. Have the best NMUN time of all!

Yours,



Ivana Častulíková



Palacký University
Olomouc

NMUN•EUROPE is sponsored by the National Collegiate Conference Association in partnership with Palacký University. The NCCA/NMUN is a 501(c)(3) nonprofit organization of the United States, an accredited Non-Governmental Organization with the United Nations, and a UN Academic Impact Member.

SATURDAY, 21 NOVEMBER

All Day Arrive in Prague
 Various Times Cultural Tours and Site Visits: Walking Tour of Prague*

SUNDAY, 22 NOVEMBER

Morning Cultural Tours and Site Visits: Walking Tour of Prague*
 (for those who didn't arrive in time for the Saturday tours)
 12:00pm Check-Out/Escort to Praha Hlavni Nadrazi Train Station* Hotel Lobby
 4:15pm NMUN Express Train Arrives in Olomouc, Escorts to Hotels* Olomouc Train Station
 6:00pm - 6:30pm Olomouc Tree Lighting Ceremony (optional) Main Square (Horní Náměstí)
 (group walk from your hotel to the square about 5:40pm)
 6:30pm - 8:00pm Conference Registration Konvikt, Palacký University

MONDAY, 23 NOVEMBER

7:30am - 8:30pm Cultural Tours and Site Visits: Auschwitz-Birkenau Concentration Camp*
 Meet: Hotel Lobby of Flora, Trinity, Business Alley, Pension Na Hradě,
 Arigone, or Pension Křivá

TUESDAY, 24 NOVEMBER

8:30am - 4:00pm Cultural Tours and Site Visits: Bouzov Castle and Javoříčko Caves*
 Meet: Hotel Lobby of Flora, Trinity, Business Alley, Pension Na Hradě,
 Arigone, or Pension Křivá
 5:00pm - 5:45pm Rules Training (Optional) Fortress of Knowledge
 5:30pm - 5:45pm Late NMUN Conference Registration Fortress of Knowledge
 6:00pm - 7:00pm Opening Ceremony (followed by a light snack) Fortress of Knowledge
 8:00pm - 9:30pm Committee Session I See Committee Locations Below
 8:30pm - 9:30pm Faculty Welcome Reception Konvikt, Palacký University

* Only for those with advance reservations.

Committee Locations – Konvikt, Palacký University

Economic and Social Council Plenary (ECOSOC) The Corpus Christi Chapel, Room 001, 1st Floor
 General Assembly Plenary (GA) Auditorium Maximum, Room 109, 2nd Floor
 Security Council (SC) Lectorium Medium, Room 003, 1st Floor
 UN Educational, Scientific & Cultural Organization (UNESCO) Lectorium Lecture Hall, Room 117, 2nd Floor
 Conference Services, Computer/Copier Room Room 236, 2nd Floor
 Faculty Room Room 226, 2nd Floor

WEDNESDAY, 25 NOVEMBER

9:30am - 1:00pm Committee Session II (GA and SC) See Committee Locations on p. 6
 9:30am - 1:30pm Committee Session II (ECOSOC and UNESCO) See Committee Locations on p. 6
 10:00am - 12:00pm Faculty Walking Tour of Olomouc Konvikt, Palacký University
 1:00pm - 3:00pm Lunch for GA and SC (on your own)
 1:30pm - 3:30pm Lunch for ECOSOC and UNESCO (on your own)
 3:00pm - 6:00pm Committee Session III (GA and SC) See Committee Locations on p. 6
 3:30pm - 6:00pm Committee Session III (ECOSOC and UNESCO) See Committee Locations on p. 6
 4:00pm - 5:00pm Faculty Lecture, Central Europe: Present and Future Arigone Hotel Conference Room
 6:00pm - 7:30pm Dinner Break (on your own)
 7:30pm - 10:00pm Committee Session IV See Committee Locations on p. 6
 8:00pm - Faculty Jazz Night (food available for purchase) Jazz Tibet, see map on p. 9

THURSDAY, 26 NOVEMBER

9:30am - 1:00pm Committee Session V (GA and SC) See Committee Locations on p. 6
 9:30am - 1:30pm Committee Session V (ECOSOC and UNESCO) See Committee Locations on p. 6
 1:00pm - 3:00pm Lunch for GA and SC (on your own)
 1:30pm - 3:30pm Lunch for ECOSOC and UNESCO (on your own)
 3:00pm - 6:30pm Committee Session VI (GA and SC) See Committee Locations on p. 6
 3:30pm - 6:30pm Committee Session VI (ECOSOC and UNESCO) See Committee Locations on p. 6
 5:00pm - 7:00pm Palacký University English Programs Information Table Konvikt, Palacký University
 7:30pm - 9:00pm US Thanksgiving Dinner* Various Restaurants

FRIDAY, 27 NOVEMBER

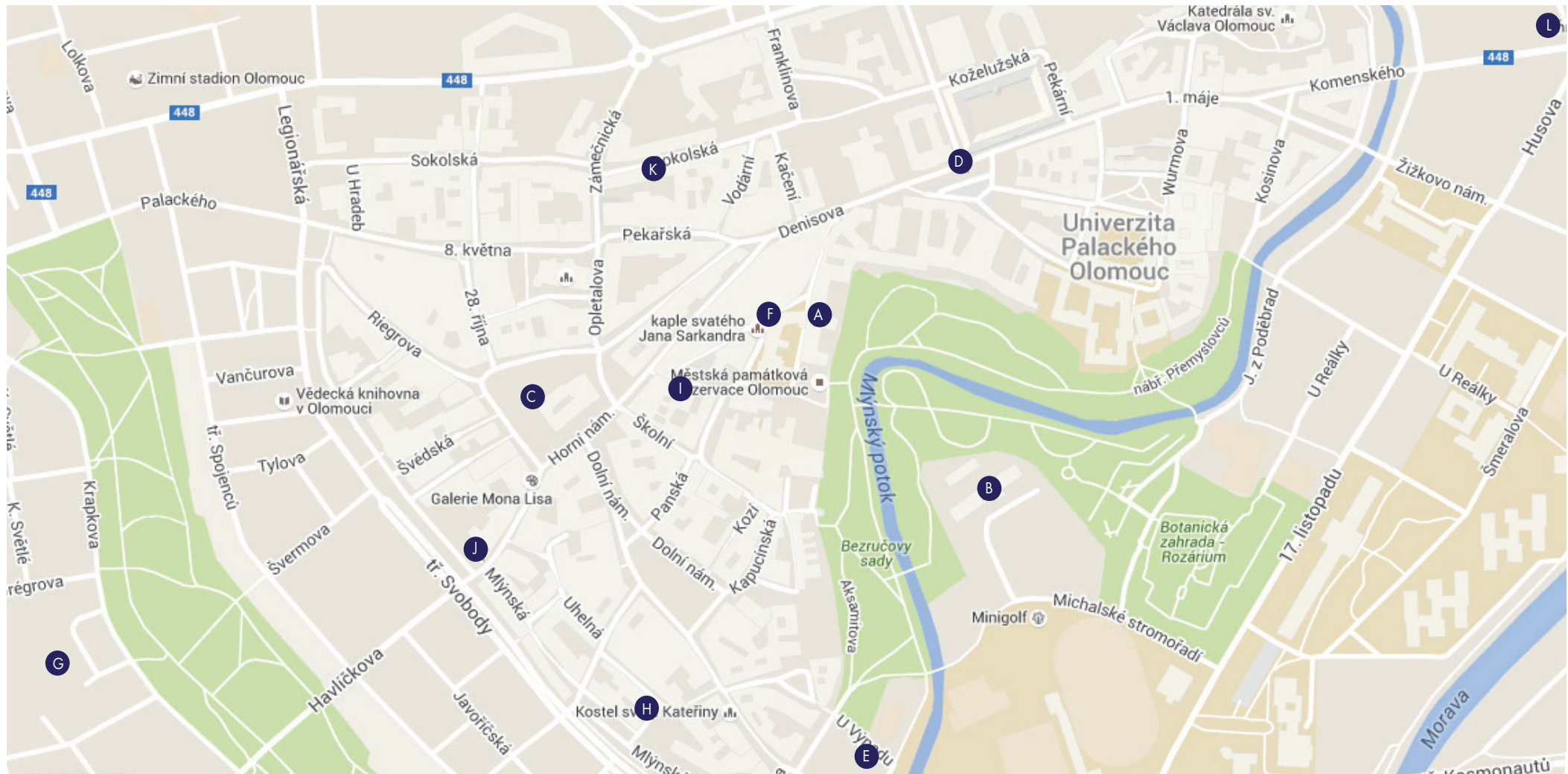
9:30am - 12:30pm Committee Session VII and Voting See Committee Locations on p. 6
 12:30pm - 3:00pm Lunch (on your own)
 3:00pm - 4:30pm Closing Ceremony Fortress of Knowledge
 9:00pm - Delegate Dance (Loco Poco Concert 9-10pm) Club M15, see map on p. 9

SATURDAY, 28 NOVEMBER

Morning Train to Prague* Olomouc Train Station

* Only for those with advance reservations.





- A. Konvikt (The Jesuit College/Palacký University Art Centre), Univerzitní 3, Olomouc, Czech Republic
- B. Fortress of Knowledge, Palacký University Interactive Museum of Science (Pevnost poznání), 17. listopadu 7771 01, Olomouc, CR
- C. Main Square (Horní náměstí)
- D. Republic Square (Náměstí republiky)
- E. Business Hotel Alley, Michalské stromořadí 1061/5772 00, Olomouc, Czech Republic; Phone: +420 585 502 999
- F. Hotel Arigone, Univerzitní 20 and Mahlerova 19, Olomouc, Czech Republic; Phone: +420 585 232 350-1

- G. Hotel Flora, Krapkova 439/34 779 00, Olomouc, Czech Republic; Phone: +420 585 422 200
- H. Pension Křivá, Křivá 76/8779 00, Olomouc, Czech Republic; Phone: +420 585 209 204
- I. Hotel Pension Na Hradě, Michalská 4779 00, Olomouc, Czech Republic; Phone: +420 585 203 231
- J. Hotel Trinity, Pavelčákova 22, Olomouc, Czech Republic; Phone: +420 581 830 811
- K. Jazz Tibet Club (Faculty), Sokolská 551/48779 00, Olomouc, Czech Republic; Phone: +420 585 230 399
- L. M15 (15 Minut Music Club) Delegate Dance, Komenského 31, Olomouc, Czech Republic; Phone: +420 581 045 665/777 059 150

In the Land of the Rising NMUN



20 - 26 November 2016

Iguana Go! Do You?



January 2018

COUNTRY	SCHOOL
Angola	Texas Christian University (USA)
Argentina	Texas Christian University (USA)
Australia	The University of Arkansas (USA)
Austria	The University of Arkansas (USA)
Bangladesh	De La Salle University-Manila (PHL)
Bolivia	Constantine the Philosopher University in Nitra (SVK)
Botswana	Bellevue College (USA)
Brazil	Georgia State University (USA)
Chad	Marian University (USA)
Chile	The University of Arkansas (USA)
China	St. Petersburg College (USA)
Colombia	Université du Québec à Montréal (CAN)
Congo	Clayton State University (USA)
Croatia	Comenius University in Bratislava-FSES (SVK)
Czech Republic	University of Bridgeport (USA)
Democratic Republic of the Congo	De La Salle University-Manila (PHL)
Estonia	De La Salle University-Manila (PHL)
Finland	De La Salle-College of Saint Benilde (PHL)
France	Palacký University (CZE)
Germany	California State University - San Bernardino (USA)
Ghana	Marian University (USA)
Greece	Tallahassee Community College (USA)
India	Constantine the Philosopher University in Nitra (SVK)
Israel	California State University - San Bernardino (USA)
Italy	The University of Texas at Tyler (USA)
Japan	The University of Arkansas (USA)

COUNTRY	SCHOOL
Jordan	Kobe City University of Foreign Studies (JPN)
Lithuania	UNA Germany NRW Branch (DEU)
Malaysia	De La Salle-College of Saint Benilde (PHL)
Nepal	Tallahassee Community College (USA)
New Zealand	Long Island University - Brooklyn Campus (USA)
Nigeria	McMurry University (USA)
Pakistan	De La Salle-College of Saint Benilde (PHL)
Panama	De La Salle-College of Saint Benilde (PHL)
Portugal	Long Island University - Brooklyn Campus (USA)
Republic of Korea	Kobe City University of Foreign Studies (JPN)
Russian Federation	Manhattan College (USA)
Saudi Arabia	MacEwan University (CAN)
Serbia	University of Erfurt (DEU)
South Africa	Georgia State University (USA)
Spain	Valdosta State University (USA)
Sudan	University of Erfurt (DEU)
Sweden	The University of Arkansas (USA)
Switzerland (ECOSOC)	The University of Melbourne (AUS)
Switzerland (GA, UNESCO)	Constantine the Philosopher University in Nitra (SVK)
Uganda	The University of Arkansas (USA)
United Kingdom	Wichita State University (USA)
United States of America	Riverside City College (USA)
Venezuela	West Virginia University (USA)
Zimbabwe	Ernst-Moritz-Arndt-University of Greifswald (DEU)

Abbreviations for where each school is located are taken from the UN Stats. Div.: <http://unstats.un.org/unsd/methods/m49/m49alpha.htm>.

Be a Part of It: New York, New York



20 - 24 March 2016
27 - 31 March 2016

Red, White and UN Blue



11-13 November 2016



Ivana Častulíková
Secretary-General



Thera Watson
Deputy Secretary-General

**General Assembly
Plenary (GA)**



Miriam Müller
Director

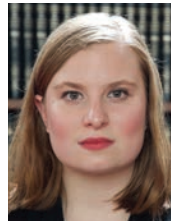


Jan Šmíd
Assistant Director

**Economic and Social Council
Plenary (ECOSOC)**



Yvonne Jeffery
Director



Bronislava Lehocká
Assistant Director

**UN Educational, Scientific and
Cultural Organization (UNESCO)**



Jordan Drevdahl
Director

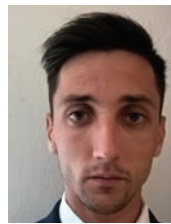


Šárka Ševčíková
Assistant Director

**Security Council
(SC)**



Alfie Jones
Director



Ondřej Němčák
Assistant Director



Ivan Gabal



Jaroslav Miller

Opening Ceremony Keynote Speaker

PhDr. Ivan Gabal, MP, Assembly of Deputies,
Parliament of the Czech Republic

Closing Ceremony Keynote Speaker

Prof. Jaroslav Miller, Rector, Palacký University

NCCA/NMUN

Prof. Eric Cox, President
Michael Eaton, Executive Director
Paul VanCura, Director of Programs
Jess Hopeman, Program Associate
Jeri Lu Mattson, Financial Manager

Palacký University

Prof. Jaroslav Miller, Rector, Palacký University
Prof. Jiří Lach, Dean, Faculty of Arts
Vice-Deans Ondřej Molnár, Jiří Špička and Dana Bilíková
Prof. Tomáš Lebeda, Head of the Department of
Politics and European Studies, Faculty of Arts
Markéta Žídková, Department of Politics and
European Studies; NCCA Board Member
PESUP Student Organization
Students of the NMUN-Practice Course at the
Department of Politics and European Studies

Juraj Kováč and Josef Petrák, Some Move, Travel Agency

E-Creative Solutions

The Staff of Our Conference Hotels

Distinguished Speakers

The Volunteer Staff of NMUN•Europe

Study at Palacký University

Department of Politics and European Studies

- Top research and educational institution in the Czech Republic
- Focus on political science, European affairs and international relations
- Degrees range from an undergraduate B.A. program to a post-graduate Ph.D program, including a Masters program in English for international students
- One semester of Central European Studies Program for students interested in life and development in the Central European region.

Palacký University, the second oldest university in the Czech lands, was founded in 1573.



Palacký University
Olomouc



Visit our table from 5-7pm
Thursday to learn about PU
English language programs.



DELEGATES

While participating in the National Model UN conference, delegates have a responsibility to always maintain the highest level of professionalism and diplomacy. Conference staff, faculty advisors, fellow delegates, speakers, as well as non-NMUN hotel guests should be treated with the highest level of courtesy and respect, including on social media and in electronic communications. Professionalism in speech, actions, and appearance by delegates is a requirement of this conference, and necessary to its educational mission. It is expected that all delegates will respect the property of our host hotels and all other facilities used during our conference.

NMUN reserves the right to restrict future registration for any participant or school, whose delegates or faculty advisors are not able to uphold their responsibility to the conference's code of conduct.

Delegates are expected to:

- Remain "in character" by consistently advocating the interests and representing the policies of the country assigned. To act "in character" also entails displaying respect for the opinions and ideas of fellow delegates, even if these opinions and ideas conflict with a given delegate's own country's priorities.
- Collaborate with fellow delegates when possible.
- Be courteous and professional at all times, including on social media and in electronic communications.
- Attend all committee sessions.
- Avoid the consumption of alcohol and other drugs in committee sessions. Any issues related to illicit drugs will be immediately directed to the attention of local authorities.

Delegates who disrupt committee sessions or create problems in the hotel may be barred from further participation in the conference.

Delegates are encouraged to enjoy the variety of activities available at our conference venues. Please bear in mind, however, the purpose of being here is participation in NMUN and failure to attend committee sessions may result in your withdrawal from the conference.

If you are going to drink, please drink responsibly. Excessive alcohol consumption should be avoided.

FACULTY ADVISORS

The role of faculty advisors, while at the conference, is to make all efforts to see that their students maintain a positive and professional approach to the conference. The educational quality of the conference is primarily dependent on the active and professional participation of all delegates. Faculty advisors can ensure this by monitoring the attendance of their students at committee meetings and helping them understand the skills of diplomacy as practiced at National Model United Nations. Faculty advisors must maintain the highest level of professionalism toward all conference participants and staff.

During the conference, faculty advisors are encouraged to advise students on specific questions such as a Member State's policy or issues of international law, but must not participate in the actual writing of resolutions or caucusing activities. NMUN allows students an opportunity to demonstrate their preparation and research skills. While faculty advisors are encouraged to observe their students from the back of committee rooms, participation in the committee process must be left to the student delegates and the conference staff.

Faculty Advisors are expected to:

- Provide leadership to their delegates and to other delegations by serving as information resources when appropriate.
- Respond to questions and concerns without interfering with the work of the committees or the deliberations of delegates, whether in formal session or in caucus.
- Refrain from using academic credit and grading policies that force participation beyond that country's normal position in the UN.
- Remind their delegates of the educational purpose of the simulation. Awards should not be a delegation's main emphasis.
- Attend and participate in faculty advisors events.
- Offer suggestions and assistance to new faculty advisors.

HEAD DELEGATES

Head delegates provide leadership to their delegates and to other delegations by serving as information resources. They should attend and participate in head delegates meetings. Head delegates may be assigned to a committee or may serve solely in an advisory role. Head delegates assigned to a committee should observe the delegate code of conduct. Those not assigned to a particular committee should interact with delegates as would a faculty advisor.

SEXUAL HARASSMENT AND DISCRIMINATION POLICY

It is the intention of the NCCA that the environment of National Model United Nations supports our educational goal. The organizers will not tolerate any instances of discrimination based on race, color, sex, sexual orientation, national origin, religion, age or disability.

If any delegate, staff, or faculty advisor believes they have encountered discrimination, which results in a hostile working environment or disparate treatment, they must bring it to the attention of the Secretary-General of the conference. In the event that this is not possible, they must bring it to the attention of the organizers. The NCCA will investigate the merits of the allegations, interviewing all parties involved.

Based on the findings, organizers may:

- take no action
- issue a verbal reprimand
- separate the individual from the conference
- implement any other action deemed appropriate

See nmun.org/policies_codes.html for information on the procedure for addressing code of conduct violations.

DRESS CODE

All clothing must adhere to guidelines that portray professionalism and modesty. If a delegate's attire is deemed inappropriate by NMUN staff, the delegate will be asked to leave the session and return with appropriate attire.

- Standard delegate attire for the conference is business jacket, slacks/skirt, dress shirt (with tie for men) and dress shoes.
- Dress sweaters, shorts, ball caps, jeans, sneakers and sunglasses are considered too casual. Clothes that expose excessive bare skin or are otherwise revealing are inappropriate.
- It is not appropriate for delegates to display any national symbols such as flags, pins, crests, etc. on their person during sessions. UN symbols are acceptable.
- Western business dress is preferred. Traditional dress is only permitted for international delegates in whose native countries "professional business dress" includes traditional cultural dress. NMUN will not tolerate any delegate's attempt to portray a "character" using traditional cultural attire as costume.

Faculty advisors/team leaders, guests, and volunteer staff serve as role models for delegates. Thus they are required to dress in western business attire while participating in scheduled conference sessions.

Delegate Awards

National Model United Nations has established criteria for evaluating delegate performance. Each element is equally important to the overall awards determination process. All committees are weighted equally, and delegations are rated on a mathematical formula in relation to the total number of committees represented by the individual Member State.

Areas of evaluation are:

- Remaining in character - defined as advocating your assigned country's position in a manner consistent with economic, social and geopolitical constraints.
- Participating in committee - evaluated both during formal sessions and caucusing.
- Proper use of the rules of procedure - NMUN uses the rules of procedure to facilitate effective workings of committee and debate.



For more details see: nmun.org/europe15_recognition.html.

Motion	Purpose	Debate	Vote	Explanation
**Point of Order	Correct an error in procedure	None	None	Refers to a specific rule
**Appeal of the Chair	Challenge a decision of the Chair	None	Majority	Question the Chair's ruling
Suspension of the Meeting	Recess meeting for a defined period	None	Majority	Used to go into informal debate or break for a given time
Adjournment of the Meeting	End meeting	None	Majority	Used only on final day; ends committee for the year
Adjournment of Debate	End debate without a substantive vote	2 pro/2 con	Majority	Tables the topic; requires a roll call
Closure of Debate	Vote on all draft resolutions or report segments; move to an immediate vote	2 con	2/3 Majority	Ends all discussion on current topic
**Division of the Question (Used in voting only)	Consider clause(s) separately from rest of draft resolution or report segment			Voted on in order of most to least radical change
	Part I: Procedural vote on if this motion should be considered	2 pro/2 con	Majority	If passes: Clause(s) removed and voted on separately If fails: No change to clause(s)
	Part II: Substantive vote to accept or reject separate clauses	None	Majority	If passes: Annex passes If fails: Clause(s) discarded and no longer part of any draft resolution
**Roll Call Vote (Used in voting only)	Vote by roll call, rather than show of placards	None	None	Automatically granted once requested
**Adopt by Acclamation (Used in voting only)	Adopt a draft resolution or report segment as a body by consensus	None	None	Once motioned Chair must ask if there are any dissensions
Reconsideration	Re-open debate on an issue (Motion must be made by a member who voted in favor of Adjournment of Debate)	2 con	2/3 Majority	Untables topic that was tabled by Adjournment of Debate
*Set the Speaker's Time	Set or change the time allotted to each speaker	2 pro/2 con	Majority	It is very rarely used at the UN and may be ruled out of order by the Chair
Close the List of Speakers (also applies to re-opening the list)	No additional speakers may be added to the list	None	Majority	
Adoption of the Agenda	Approval of agenda order	None	Majority	

* No motions to set the speaking time will be accepted during the first committee session; these motions will only be accepted in subsequent sessions upon prior approval of the dais.

** Only these Motions are accepted during voting procedure.